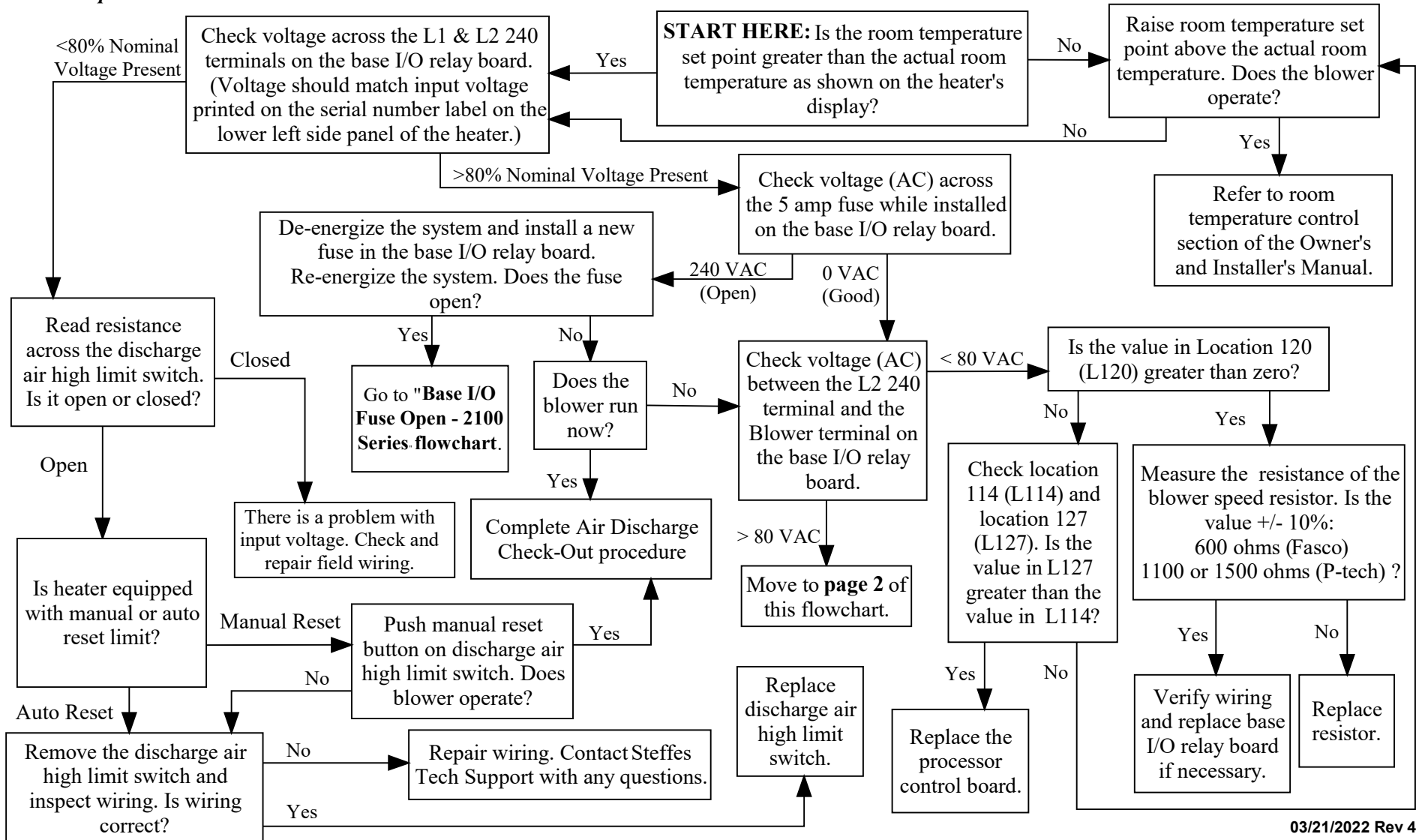


Blower Does Not Operate - 2100 Series (208/240 VAC)

Power to the blower and control circuit for the 2100 Series heaters is supplied through the blue and the blue/black wires in the heater's line voltage wiring harness (umbilical cord). If the display on the heater is illuminated and the room temperature set point is higher than the current room temperature, the blower should be operating. If it is not, check for an open 5 amp fuse on the base I/O relay board. If this fuse is open, the most probable causes would include a shorted blower or shorted wiring to the blower or damper actuator.

NOTE: If the 5 amp fuse is closed, verify that voltage is present between the "L2 240" and "blower" terminals on the base I/O relay board. With voltage present across these two terminals, the blower should be operating. If no voltage present check the value in Location 120 (L120). If greater than 0, voltage should be present.



Blower Does Not Operate - 2100 Series (208/240 VAC) cont...

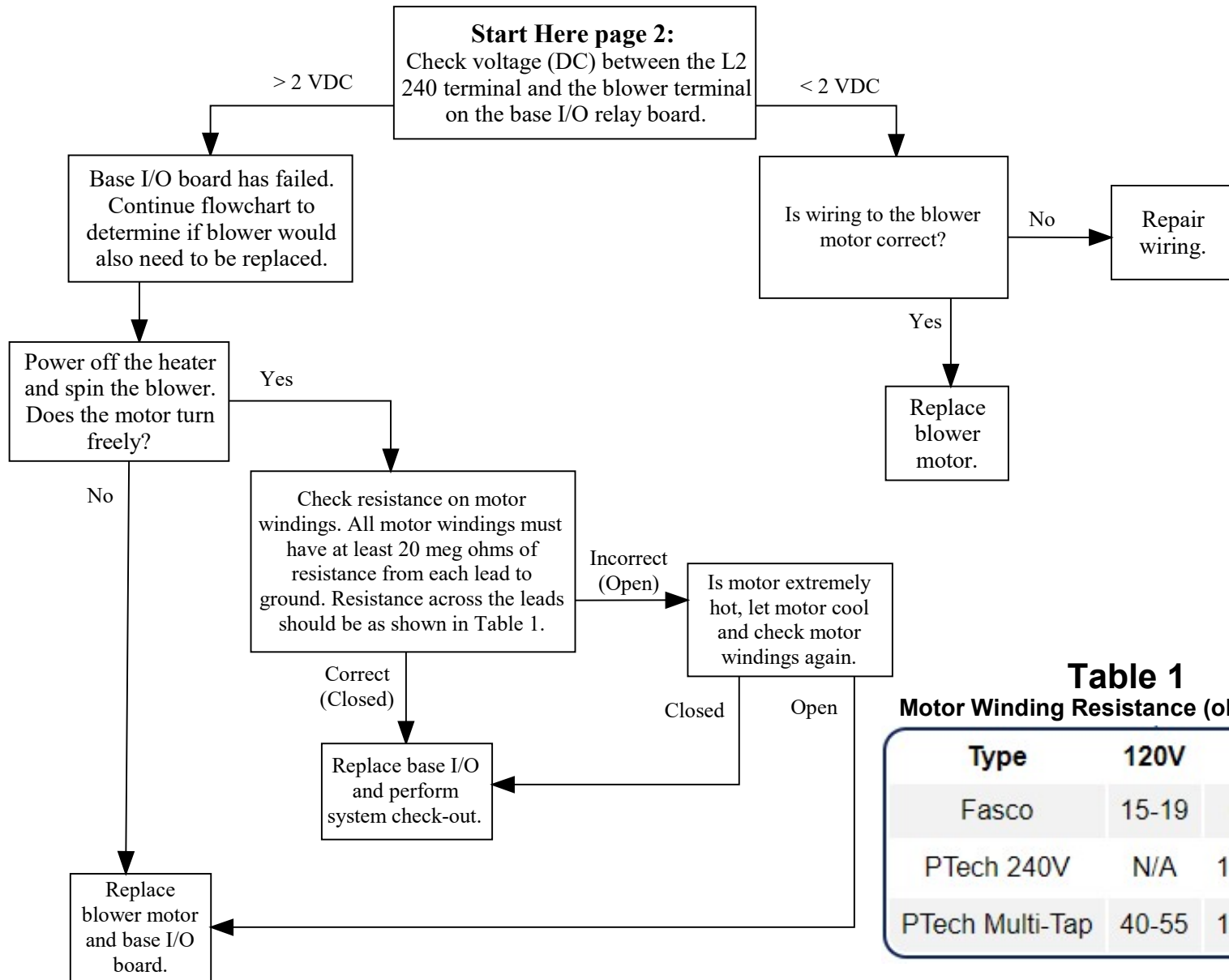


Table 1
Motor Winding Resistance (ohms Ω)

Type	120V	240V
Fasco	15-19	60-75
PTech 240V	N/A	175-225
PTech Multi-Tap	40-55	160-210